

SELMACHTM
MACHINERY

Making Metal Work



XTS Tube and Section Laser

The Morgan Rushworth XTS range of tube laser cutting machines are especially applicable for round, square, rectangular, oval, waist round tubes and even beams.

Manufactured with the world's leading fibre laser resonator and electronic components to ensure superior stability. The high clamping bed feature provides outstanding rigidity whilst performing at high speed and acceleration, taking your tube laser cutting to the next level.





SUPERIOR TUBE CUTTING QUALITY



SEMI AUTOMATIC CHAIN UNLOADING SYSTEM



CNC CONTROL AT YOUR FINGER TIPS

- Equipped with new multi-touch CNC Controller
- 5000mm-8000mm unrestricted mixed row automatic intelligent processing
- Seamlessly docked with the intelligent manufacturing factory
- MESS cloud data management system

LANTEK FLEX3D

- Easy, Flexible Design
- Accurate, suitable for a wide range of pipe types
- Optimising and Cutting of Tubes
- CNC Simulation and Generation



Machine Features

- High performance Laser Source
- Fibre optic beam delivery system
- Autofocus Laser Cutting Head
- 3D Bevel Cutting Torch
- High strength, rigid gantry design to ensure high accuracy and allow high acceleration
- High precision class alpha rack and pinion drive motion system
- Applicable tube types : Round tube, square tube, rectangular tube, oval tube, D-shaped steel, T-shaped steel, H-shaped steel, channel steel, angle steel, etc.
- CE compliant complete machine enclosure and light barrier system
- LanTek Flex3d CNC Laser Control and Software
- Infeed and outfeed lengths of 6m, 8m or 12m

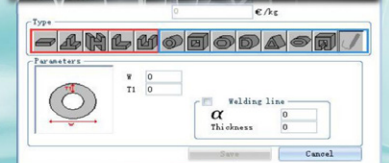
Optional Equipment

- 4 Chuck System
- Optional Magazine Loading system
- Conveyor outfeed
- Weld Seam Detection
- UPS: Un-Interruptible Power Supply
- Filtration & Extraction

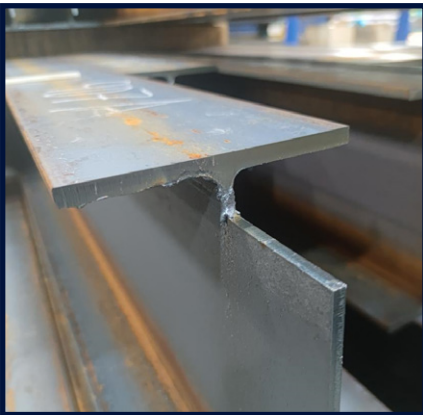
LanTek Flex3d Supporting Various Pipes

Standard pipes :
Equal diameter pipes such as round, square, OB-type, D-type, triangular, oval etc.

Meanwhile, flex3d is equipped with profile cutting function modules to cut angle steel, channel and H-shaped steel, etc.



lantek



LASER SOURCE	kW	3	4	6	12
Cutting Capacity - Mild Steel	mm	22	25	25	40
Cutting Capacity - Stainless Steel	mm	12	12	20	35
Cutting Capacity - Aluminium	mm	10	12	16	35
Cutting Capacity - Brass	mm	8	12	14	20
Cutting Capacity - Copper	mm	6	6	10	15
Cutting Capacity - Galvanised Steel	mm	8	10	14	25

TECHNICAL SPECIFICATIONS

STOCK CODE		XTS12023	XTS12028	XTS12036	XTS12045	XTS12055	XTS12063
Laser Power	kW	3 / 4 / 6 / 12					
Tube Loading / Unloading Length	mm	12,000 (Or 6,000 / 8,000 also available)					
Tube Diameter	mm	Round Ø : 10 - 230	Round Ø : 10 - 280	Round Ø : 20 - 360	Round Ø : 50 - 450	Round Ø : 50 - 550	Round Ø : 50 - 630
		Square : 10 x 10 - 230 x 230	Square : 10 x 10 - 280 x 280	Square : 20 x 20 - 360 x 360	Square : 50 x 50 - 450 x 450	Square : 50 x 50 - 550 x 550	Square : 50 x 50 - 630 x 630
		Beam: ≤ 200 x 200	Beam: ≤ 280 x 280	Beam: ≤ 360 x 360	Beam: ≤ 450 x 450	Beam: ≤ 550 x 550	Beam: ≤ 630 x 630
Cutting Profiles	Round, Square, Rectangular, Angle, Channel, H-Shape, L-Shape, Steel Band, etc						
Weight of Single Tube	kg	250	600	1,200	1,500	2,000	3,000
Positioning Speed	m/min	80	60	60	60	60	60
Chuck Rotation Speed	rpm	80	80	60	60	45	35
Axis Acceleration	G	1	1	0.8	0.8	0.6	0.4
Positioning Accuracy	mm	±0.05	±0.05	±0.05	±0.1	±0.1	±0.1
Repeat Positioning Accuracy	mm	±0.03	±0.03	±0.03	±0.05	±0.05	±0.05
Bevel	Deg	±45°	±45°	±45°	±45°	±45°	±45°