

SELMACHTM
MACHINERY

Making Metal Work



XTS Tube and Section Laser

The Morgan Rushworth XTS range of tube laser cutting machines are especially applicable for round, square, rectangular, oval, waist round tubes and even beams.

Manufactured with the world's leading fibre laser resonator and electronic components to ensure superior stability. The high clamping bed feature provides outstanding rigidity whilst performing at high speed and acceleration, taking your tube laser cutting to the next level.





SUPERIOR TUBE CUTTING QUALITY



SEMI AUTOMATIC CHAIN UNLOADING SYSTEM



CNC CONTROL AT YOUR FINGER TIPS

- Equipped with new multi-touch CNC Controller
- 5000mm-8000mm unrestricted mixed row automatic intelligent processing
- Seamlessly docked with the intelligent manufacturing factory
- MESS cloud data management system

LANTEK FLEX3D

- Easy, Flexible Design
- Accurate, suitable for a wide range of pipe types
- Optimising and Cutting of Tubes
- CNC Simulation and Generation



Machine Features

- High performance Laser Source
- Fibre optic beam delivery system
- RayTools Autofocus Laser Cutting Head
- High strength, rigid gantry design to ensure high accuracy and allow high acceleration
- High precision class alpha rack and pinion drive motion system
- Applicable tube types : Round tube, square tube, rectangular tube, oval tube, D-shaped steel, T-shaped steel, H-shaped steel, channel steel, angle steel, etc.
- CE compliant complete machine enclosure and light barrier system
- LanTek Flex3d CNC Laser Control and Software

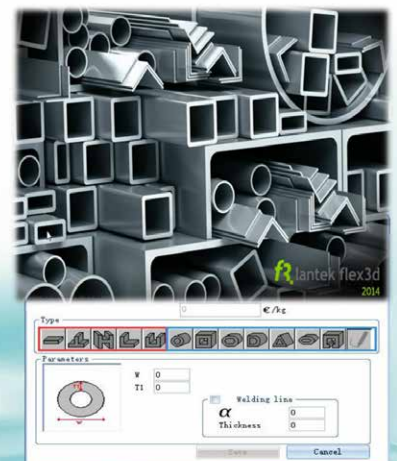
Optional Equipment

- Outfeed Support - 12m
- Precitec ProCutter Head
- 3D Bevel Cutting Torch
- Optional Magazine Loading system
- Conveyor outfeed
- Weld Seam Detection
- UPS: Uninterruptible Power Supply
- Filtration & Extraction

LanTek Flex3d Supporting Various Pipes

Standard pipes :
Equal diameter pipes such as round, square, OB-type, D-type, triangular, oval etc.

Meanwhile, flex3d is equipped with profile cutting function modules to cut angle steel, channel and H-shaped steel, etc.





HIGH SPEED FULL STROKE CHUCK - UP TO 130 RPM

Tube Range Up to 270mm



FULL SERVO DYNAMIC SUPPORT

Tube Range Up to 270mm



INTELLIGENT AUTO LOADER

2.5T Ø20-200mm; 800 x 800 x 6200mm

3,500 - 6,200mm, unrestricted mixed-row automatic intelligent processing



AUTOMATED LASER CUTTING HEAD

2D (3D Laser Cutting Optional)

Auto Focus

High degree of automation and good performance



FLY CUTTING OF TUBE

Ultra-fast fly cutting, high precision and time saving.



SLAG REMOVAL

Ensures the inner wall of the pipe is clean, eliminating secondary cleaning processes.



DUST REMOVAL

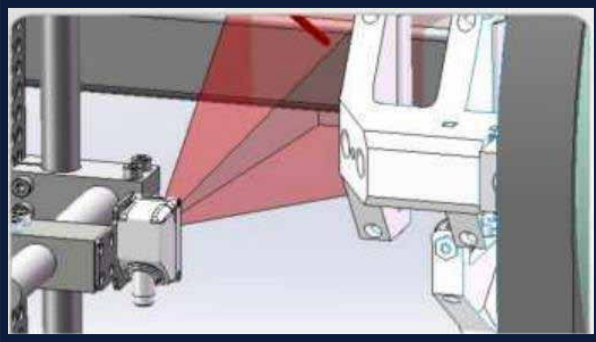
Tail chuck dust removal function to reduce environmental pollution and dust.



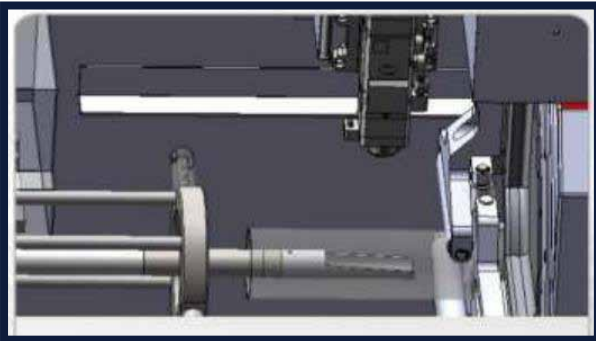
LONG PIPES & TUBES

Floating support specially designed for cutting long finished work pieces.

OPTIONAL EXTRAS



**KEYENCE VISUAL WELDING SEAM
DETECTION**



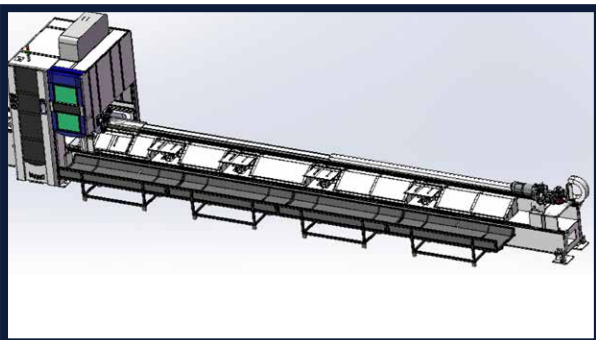
AUTOMATIC DE-SLAGGING



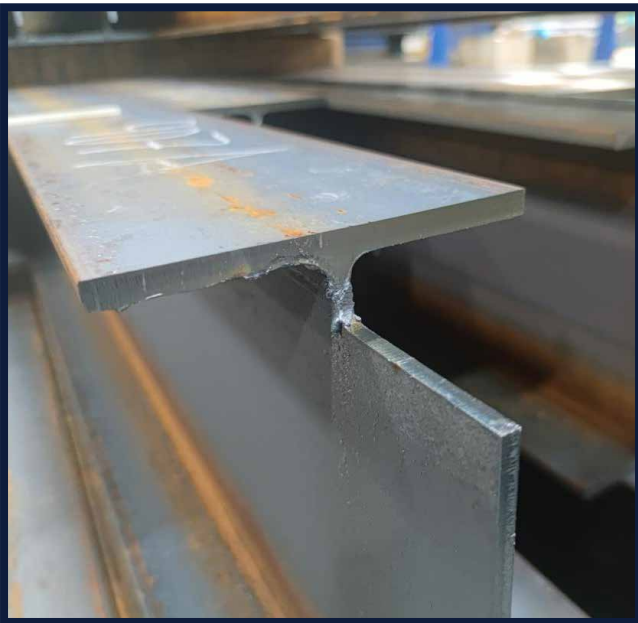
3D BEVEL CUTTING (+45°)



**MES PRODUCTION MONITOR
SOFTWARE**



C3 CHUCK



TECHNICAL SPECIFICATIONS

STOCK CODE		XTS
Laser Power	kW	1.5 / 2 / 3 / 4 / 6
Tube Loading / Unloading Length	mm	12,000
Tube Diameter	mm	Round Ø : 20 - 270 Square : 20 x 20 - 270 x 270 Beam: ≤ 270 x 270
Cutting Profiles (Standard)		Round, Square, Rectangular
Cutting Profiles (Optional)		Angle, Channel, H-Shape, L-Shape, Steel Band, etc
Weight of Single Tube	kg	300
Positioning Speed	m/min	90
Chuck Rotation Speed	rpm	100
Axis Acceleration	G	1
Positioning Accuracy	mm	±0.08
Repeat Positioning Accuracy	mm	±0.1
Bevel	Deg	±45°

LASER SOURCE	kW	1.5	2.5	3	4	6
Cutting Capacity - Mild Steel	mm	14	20	22	25	25
Cutting Capacity - Stainless Steel	mm	6	10	12	12	20
Cutting Capacity - Aluminium	mm	5	8	10	12	16
Cutting Capacity - Brass	mm	5	8	8	12	14
Cutting Capacity - Copper	mm	4	6	6	6	10
Cutting Capacity - Galvanised Steel	mm	5	6	8	10	14