

**SELMACH**<sup>TM</sup>  
MACHINERY

*Making Metal Work*

**STERLING**

**STC440 DGAS CNC Twin  
Column Automatic  
Bandsaw**



## As close to flawless cutting as you can be

The Sterling DGAS range of twin column CNC vice feed automatic bandsaws provide unique double mitre capability, offering a production solution for automatic mitre cutting in both small and large sections.

With the addition of a touchscreen CNC control, this allows the operator to program up to 10 steps in a cutting cycle. The CNC system then controls the cutting process entirely throughout the cycle dictating the angle of cut and length of cut to extreme accuracy.

The DGAS has the capability to be programmed offline for removal of operator error. The servo drive system can reduce the cutting tolerances close to zero error margin. The STC DGAS is ideal for mass production and bundle cutting of solid material, tube and profile.

### Omron Controller

**Customisable Steps:** You can enter up to 10 different steps, each with adjustable length and angle values.

**Program Storage:** A total of 30 different programs, each containing 10 steps, can be saved for future use.

**Visual Material Shape:** The material shape for the selected step is displayed on the screen.

**Material Width Measurement:** The material width is measured via an encoder in the feeder vice. If the measured width differs from the entered value, the machine will not start the cutting process.

**Minimum Cutting Length Calculation:** The system automatically calculates the minimum material length that can be cut, based on the entered width and angle values.

**Automatic Angle Selection:** When processing the next length, the system automatically selects the length closest to the last angle for optimal cutting.

**Dual Feeder System:** For longer materials, the rack and pinion system is used, while the ball screw axis is engaged for shorter materials.

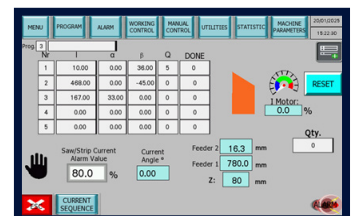
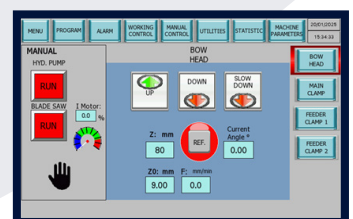
**Z-Axis Monitoring:** With the encoder on the Z-axis, the bow position and speed are displayed on the screen, allowing for real-time monitoring.

## Machine Features

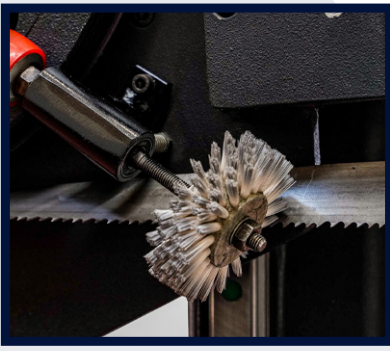
- Heavy duty CNC automatic double mitring vice feed bandsaw system allowing repeat accurate cutting of mitred profiles
- Dual feeding system, automatically selected by the machine based on your cutting length
- 2,500 /2,000mm stroke feeding system
- Offline programming capability
- CNC Touchscreen control
- Powered double mitre Particularly suited for h beam and hollow section materials
- Variable blade speed allowing full spectrum of materials to be cut
- Extremely accurate up to 0.01mm servo index vice feeding system
- Exceptionally heavy-duty with dual linear guidance

## Optional Equipment

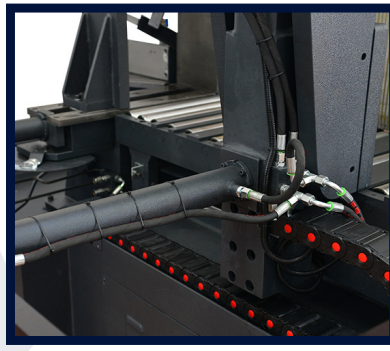
- 3m Length of outfeed / infeed Free Running Roller Conveyor
- Spray Mist Micro Coolant System (requires an air supply)
- Laser Line illumination of cut line
- Hydraulic Top Bundling Clamp
- Chip Conveyor







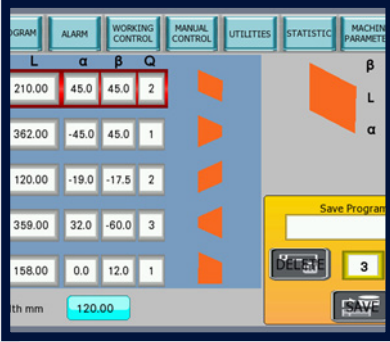
**SWARF WHEEL**



**HYDRAULIC VICE**



**INVERTER**



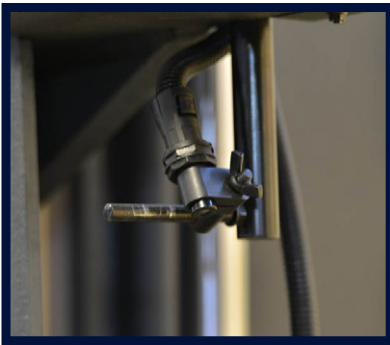
**OMRON CNC CONTROLLER**



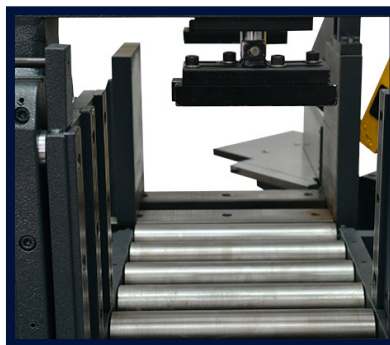
**HYDRAULIC FEEDING VICE**



**MITRE ANGLE DIGITAL READ OUT**



**LASER LINE ILLUMINATION (OPTIONAL)**



**HYDRAULIC TOP CLAMPING (OPTIONAL)**



**SPRAYMIST (OPTIONAL)**

## TECHNICAL SPECIFICATIONS

MODEL	STC440 DGAS CNC						
Capacity		0°	30°	45°	60°	-30°	-45°
○	mm	440	440	440	325	440	425
□	mm	440	440	440	325	440	425
▭	mm	640 x 440	605 x 440	495 x 440	325 x 440	545 x 440	425 x 440
Bed Height	mm	855					
Blade Size	mm	6,000 x 41 x 1.3					
Cutting Speed	m/min	20 - 100					
Main Motor	kW	4					
Tolerances	mm	0.1					
PLC Controller		Omron Touchscreen (Save up to 30 Programs – 10 Steps per program)					
Program		CNC Touchscreen for precise programming					
Stroke Length	mm	2,500			2,000		
Remnant Piece (Scrap Length)	mm	290 (Automatic Mode) 55 (Manual Mode)					
Max. Feeding	mm	6,000					
Length	mm	3,150			3,150		
Width	mm	4,200			3,750		
Height	mm	2,200			2,200		
Weight	Kg	2,000			2,000		
Operation		Automatic					
Vice		Hydraulic					