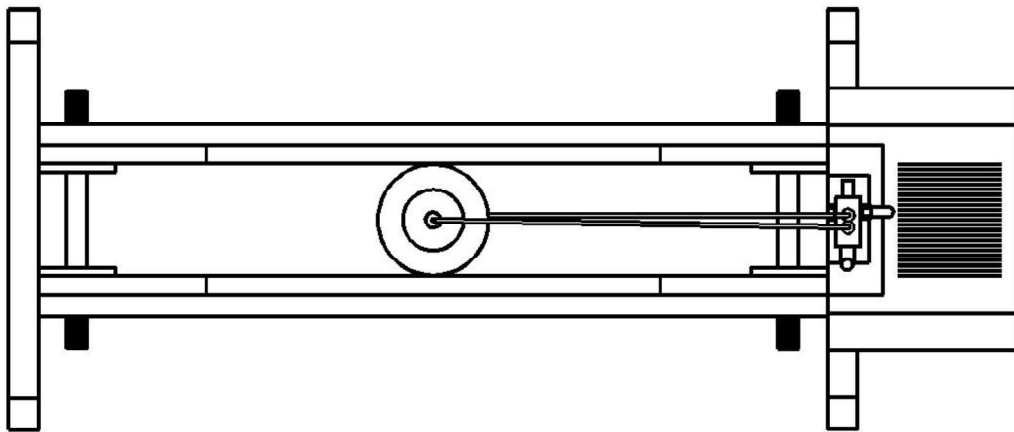


4. INSTALLATION

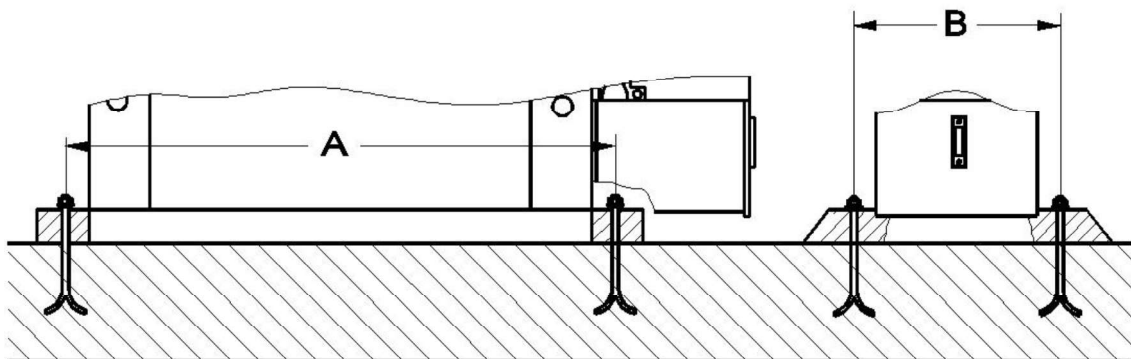
4.1. Machine Placement

This machine must be bolted securely to a flat level floor before wiring and putting into operation. Use an engineering level and shims to ensure the working table is level in all directions.

Allow sufficient space around the machine to enable the operator to safely bring work pieces to and from the table, without risk or injury to himself or any third party in the vicinity. See page 11 for safe working area.



Plan



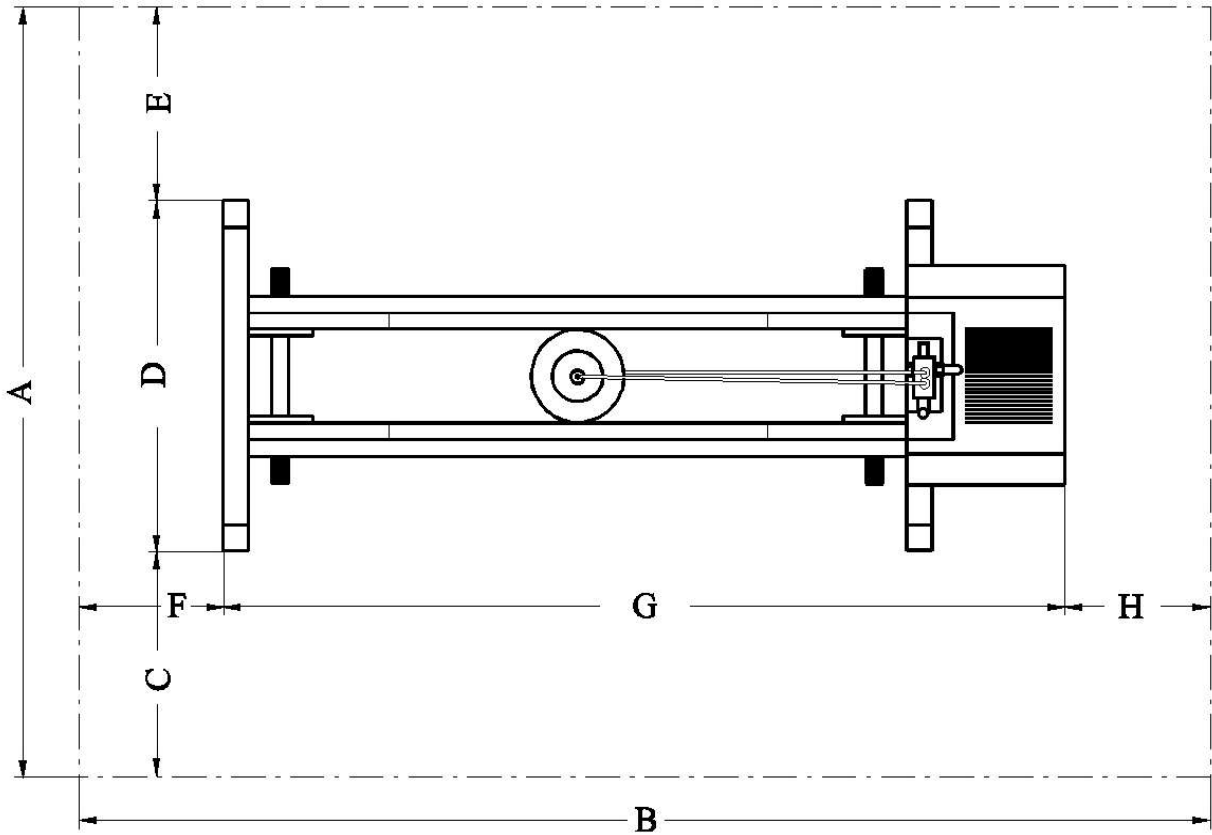
Recommended bolting arrangement

MODEL	A	B
HBM 775 / 30 t	980	480



Attention: Before the first use of the machine always check for visible oil leaks. When cleaning before use, do not use chemical cleaner

4.2. Safe Working Area



MODEL	A	B	C	D	E	F	G	H
HBM 775 / 30 t.	2300	2300	800	700	800	400	1500	400

The user should make a thorough in-use risk assessment with consideration for third party persons in the machine vicinity, and for the operator to safely bring materials to and from the table